

Fall Reopening Plan

Faculty Town Hall

Wednesday, July 29, 2020

General Academic Details, Part I

- Planning coordinated effort across multiple offices with weekly meetings with SEC, unions, and stakeholders
 - Provost's Fall 2020 Academic Planning Group – [LINK](#)
 - InCHIP Ideas Lab Report: Building a Resilient University During the COVID-19 Pandemic – [LINK](#)
- Fall semester details have been announced
 - In-person ends at Thanksgiving week; online for last two weeks of semester & exams
 - Standard class times, with options to address problems
 - Continued guidance from CETL on best practices for each modality – [LINK](#)

General Academic Details, Part II

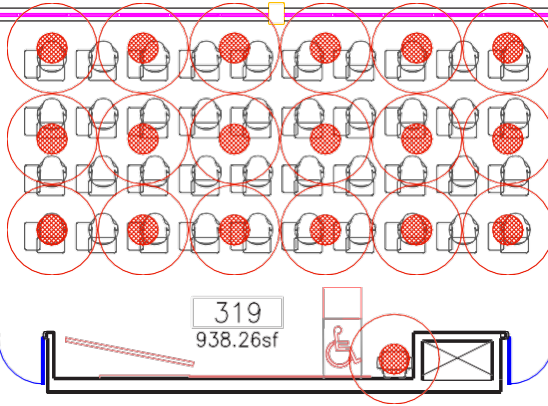
- Research up and running with labs safely resuming activities
 - Plans in place for undergraduate research – [LINK](#)
- Plans designed to account for unique circumstances of each campus
- Attention to diversity of students, faculty, and staff in all decisions
 - Support from ODI and Cultural Centers – [LINK](#)
 - Center for Students with Disabilities – [LINK](#)
 - Global Affairs – [LINK](#)
 - SHaW-Mental Health – [LINK](#)

Health/Safety on Campuses, Part I

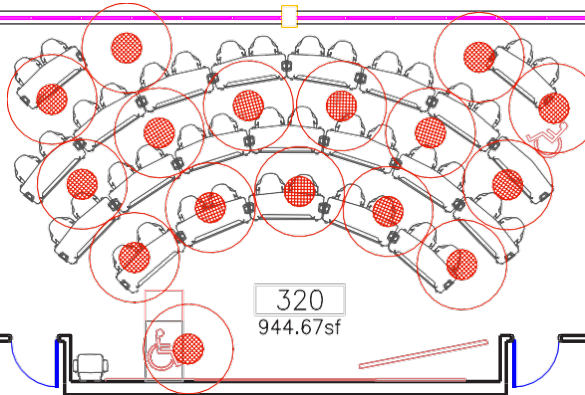
- Our approach supports those faculty and students who choose online work/instruction
- UConn Promise: shared responsibility for community health/safety – [LINK](#)
- Employees on campus for extended periods of time need to be approved/registered to maintain low density and support contact tracing
- Masks and social distancing required – [LINK](#)

Distancing Layout

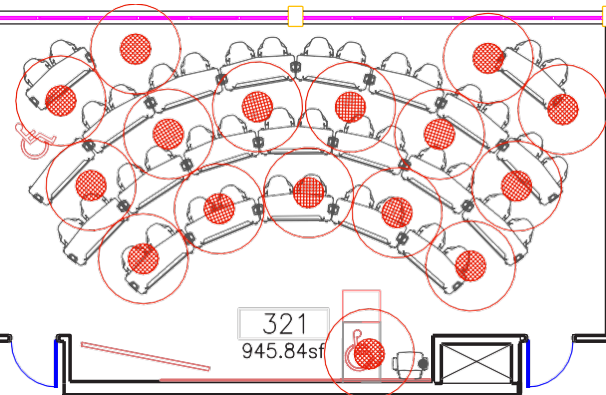
ROOM 319
7 seats



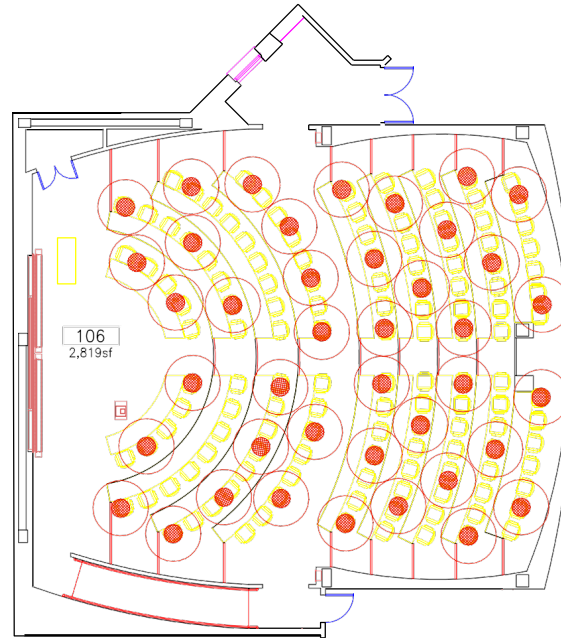
ROOM 320
7 seats



ROOM 321
7 seats



Distancing Layout



Room 106
41 Seats

Health/Safety on Campuses, Part II

- Multiple resources to support those returning to campuses are available:
 - Reopening UConn – [LINK](#)
 - Facilities Operations – [LINK](#)
 - Human Resources – [LINK](#)
 - Environmental Health and Safety – [LINK](#)
 - Additional FAQs from multiple offices – [LINK](#)
 - Schools/colleges creating guidance specific to their operations
- Testing and contact tracing
 - Testing will be available to employees approved to be on campus at fall reentry – [LINK](#)
 - Contact tracing is being undertaken in collaboration with State
- In compliance with State of CT guidance including travel restrictions – [LINK](#)

Instruction-related Details, Part I

- Support for high quality instruction across modalities
 - Provost's message on modalities – [LINK](#) and Upfront/continued support from CETL – [LINK](#)
 - Lecture capture in most spaces and creative approach to lab, performance, clinical, and cohort classes
- IT recommendations and plans for support are being finalized
 - Access, hardware, and software needs: Remote Work site from ITS – [LINK](#)
- Basic classroom guidelines
 - PPE/masks, signage and room marking – [LINK](#)
 - Requesting facilities support – [LINK](#)
 - Guest speakers/lecturers and field trips
- Classroom cleaning
 - Classrooms, as well as bathroom and common areas near classrooms disinfected twice daily
 - FacOps has disposable wipes outside classrooms to disinfect between classes per state guidance

Instruction-related Details, Part II

- Consider how to use syllabus to set the tone and support your students – [LINK](#)
- Ensure you have what you need for online instruction
 - Guidance from CETL to promote academic integrity – [LINK](#)
 - Identify most effective place to teach from
- Thinking through strategies for students entering/exiting classrooms
- Have a plan for missed classes due to instructor or student illness
- Be aware of Library resources – [LINK](#)

Other Key Considerations

- Attentive to graduate student teaching issues
- Prioritize safety with in-person experiences
 - Be aware of limitations to campus services including study spaces, bus service
 - Limit density on campuses related to events, visitors, etc.
 - Fee waiver considerations
 - Quarantine strategy for residential students – [LINK](#)
- We must stay aware of our ability to safely stay open and be prepared for supporting continued instruction if campuses must shut down again

Thank You. Questions?

- Slides with hyperlinks available at <https://provost.uconn.edu/communications/provosts-messages/>